

This document describes the firmware update procedure for MQDC-32.

The latest firmware file can be found at

http://mesytec.com/downloads/firmwareupdates/firmware_VME.html

Note that the latest software release can not be programmed onto older devices.
Please make sure that the hardware and software versions match.

Requirements

- XILINX Platform Cable USB II
- XILINX Lab Tools – 14.7 Utilities
- The latest MQDC-32 firmware file
- These steps are for Windows

Table of Contents

[Download](#)
[Start and Configuration](#)
[Connection](#)
[Cable Setup](#)
[Programming](#)
[Project saving](#)

Download

Note: In order to download the software, it is necessary to register on the XILINX homepage.

Download the “ISE Design Suite for Windows 10 - 14.7” from the following link:

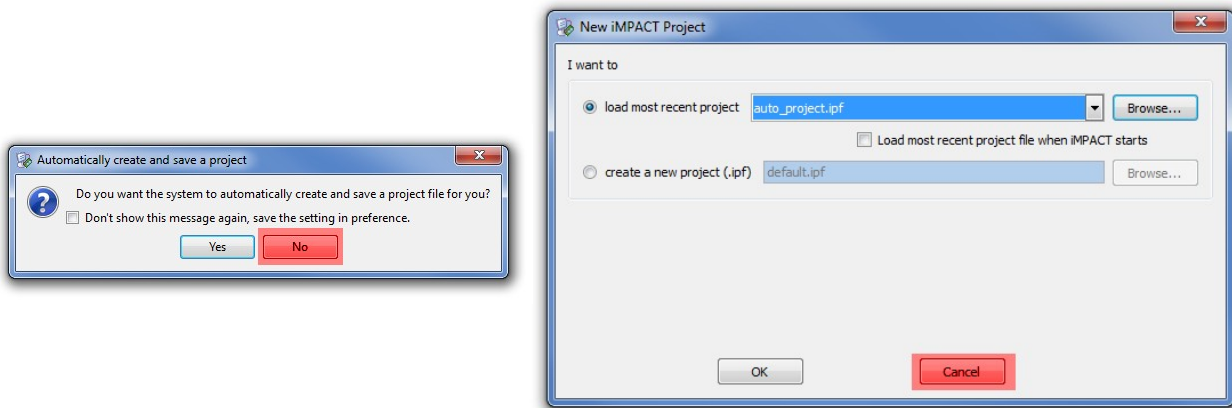
<https://www.xilinx.com/support/download/index.html/content/xilinx/en/downloadNav/vivado-design-tools/archive-ise.html>

An installation guide for the ISE package is available here:

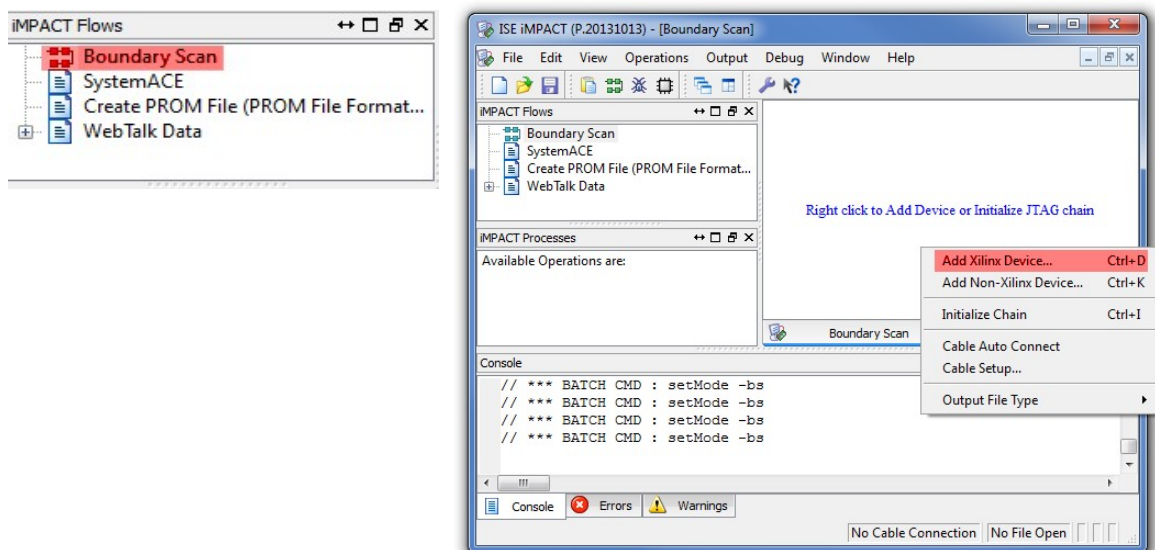
https://www.xilinx.com/support/documentation/sw_manuals/xilinx14_7/ug1227-ise-vm-windows10.pdf

Start and Configuration

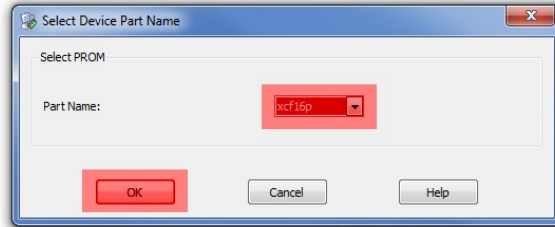
- Start **“iMPACT”** using the desktop shortcut that should have been created by the installer.
- Connect the **“XILINX Programming Device”** with the USB-Cable to your PC.
- The Status-LED of the programming device should turn yellow if the connection can be established. Otherwise use the USB-Passthrough settings of the VirtualBox to forward the device into the virtual machine (right-click the USB plug icon at the bottom of the VirtualBox screen).
- Connect the **“XILINX flat cable”** to the Programming Device.
- Follow the screenshots below for the correct setup.



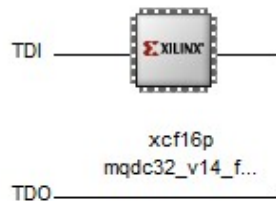
- Double Click on **“Boundary Scan”**
- Then right click into the right window and **“Add Xilinx Device...”**



- In the next window load the **“MQDC-32 Firmware File”** and click open.
- In the Window **“Select Device Part Name”** choose **xcf16p** and click OK.

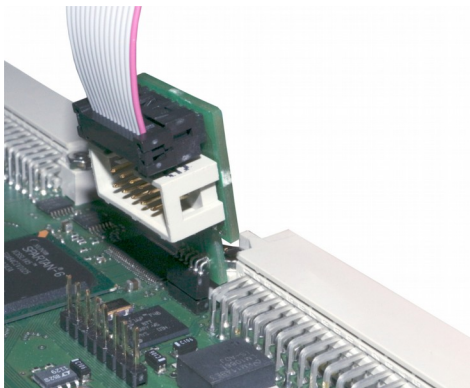


- You can see the XILINX Device Icon with the MQDC-32 Firmware on the right window in the programmer tool.

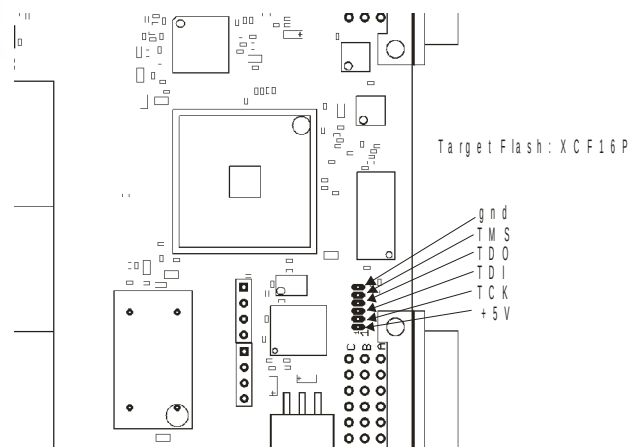


Connection

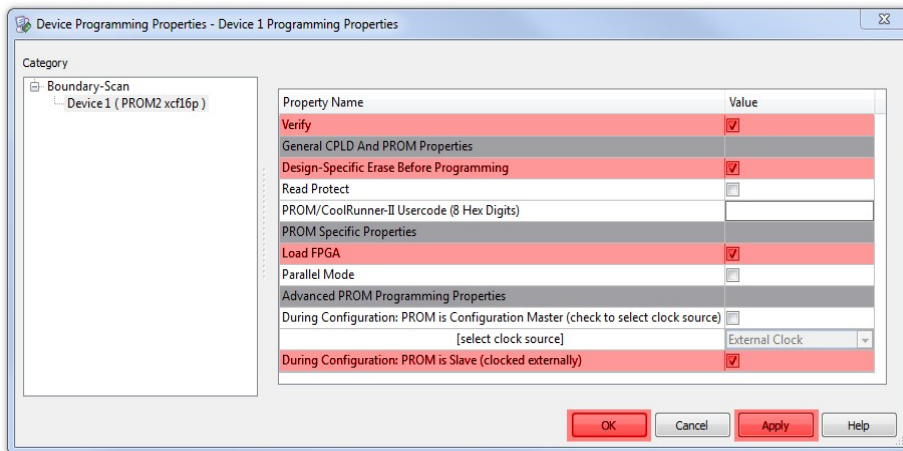
- Connect the flat cable with the mesytec adapter to the MQDC-32 and power on the MQDC-32.
- The Status-LED should turn green.



Programming connector M T D C -32, M Q D C -32

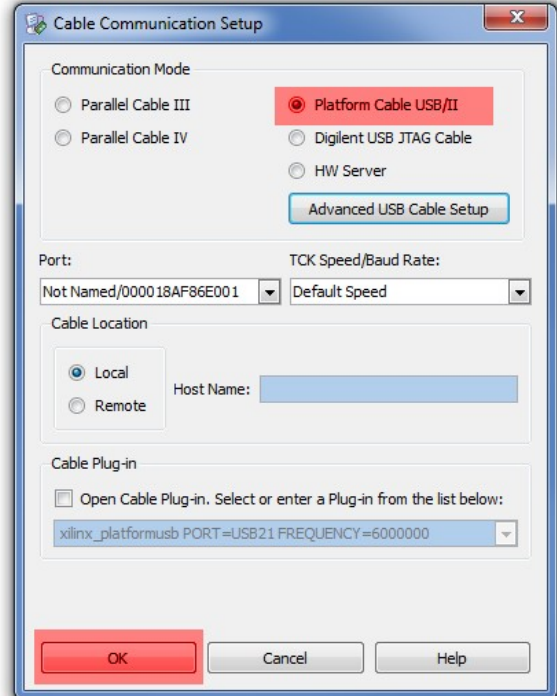
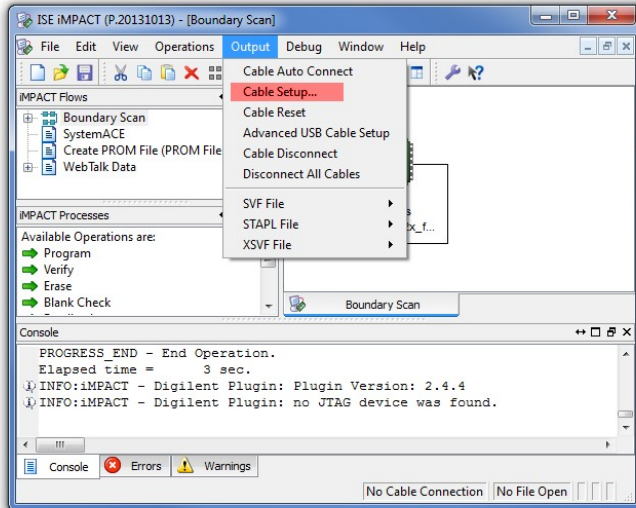


- Right Click on the Device and choose **“Set Programming Properties”**



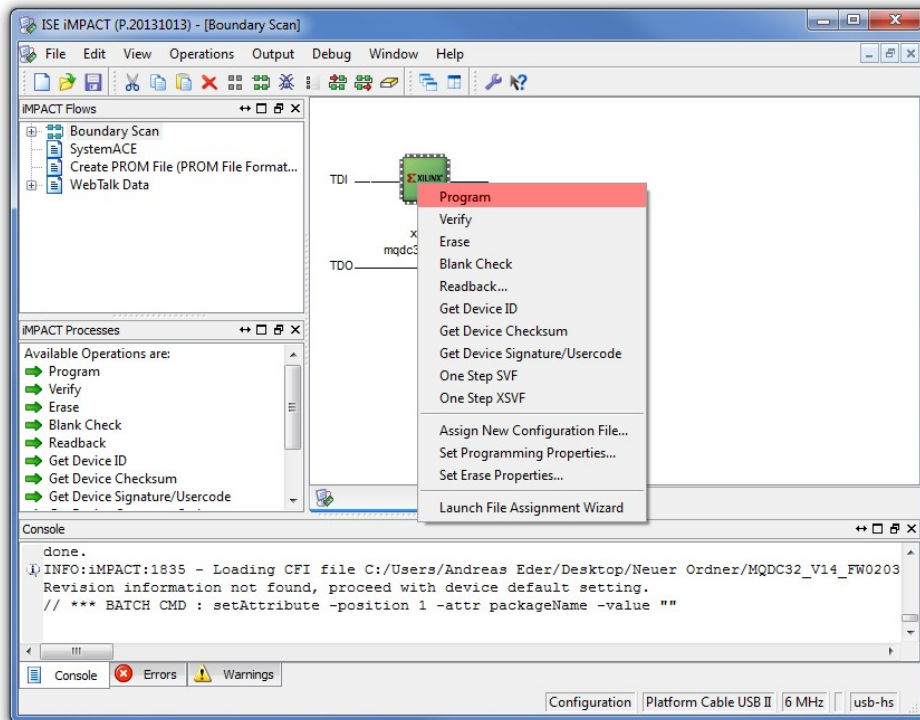
Cable Setup

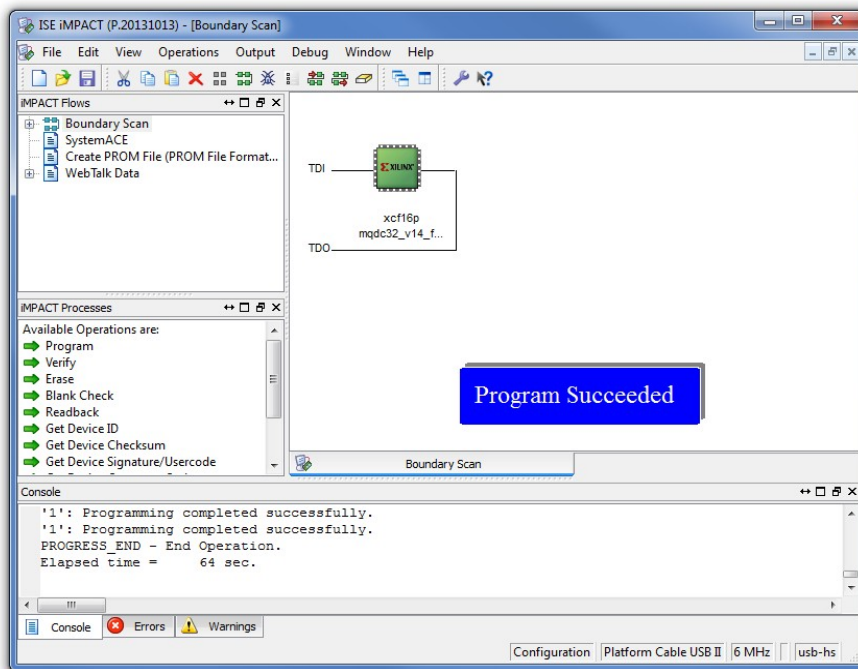
- These settings must be performed only once.



Programming

- Right click on the XILINX Device and click Program.





The MQDC-32 Firmware is now updated

Project saving

- All settings can be stored to update other MQDC-32 at a later time.

